



Bioengineered Living Shoreline Technology

Stability, Safety, Aesthetics, Water Quality, Green Technology

Presented by:
Alexis Mitchell
Regional Sales Manager

Protect | Preserve | Restore



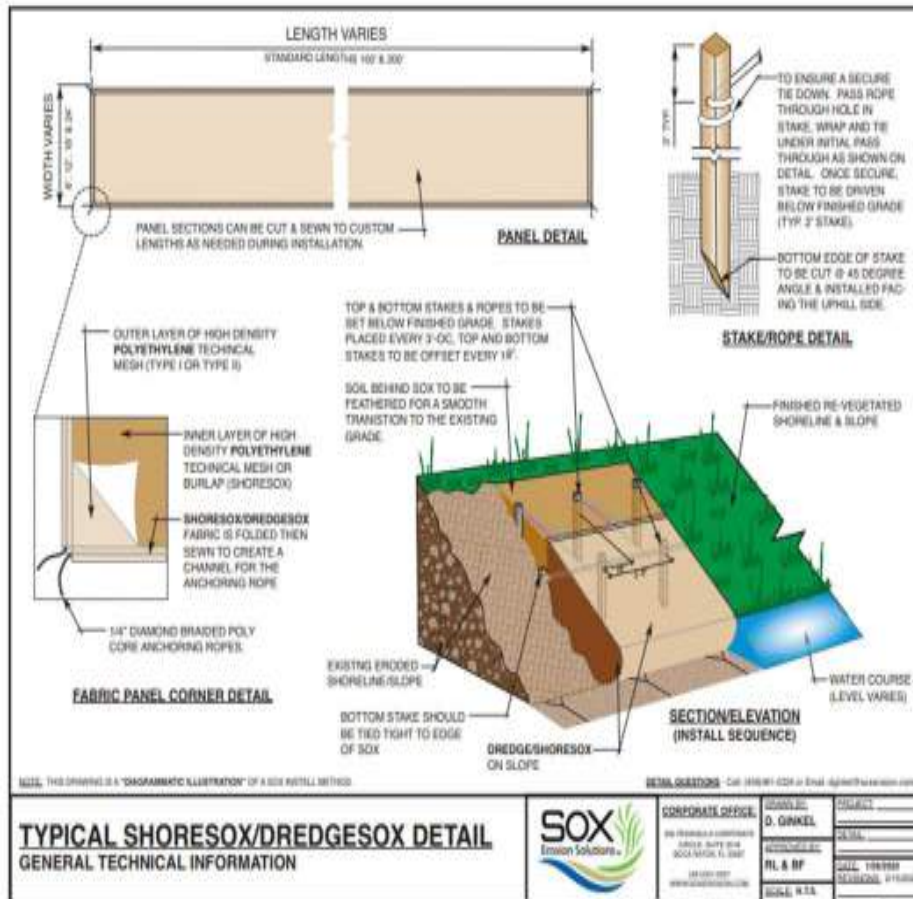
SOX Erosion Solutions™ SOX develops & manufactures a suite of innovative, patented, bioengineered erosion control systems that have been designed with an environmentally-focused methodology to stabilizing earthen environments, while promoting vegetation, in an efficient, cost effective, long-lasting way that is compliant with all BMP's of "Living Shorelines"

ShoreSOX/DredgeSOX & EvoGuard Pro systems are constructed of a patented high technical mesh employing a rip-stop design with a reinforced tethering and anchoring system proven to withstand the forces of nature, with projects that date back 25 years.



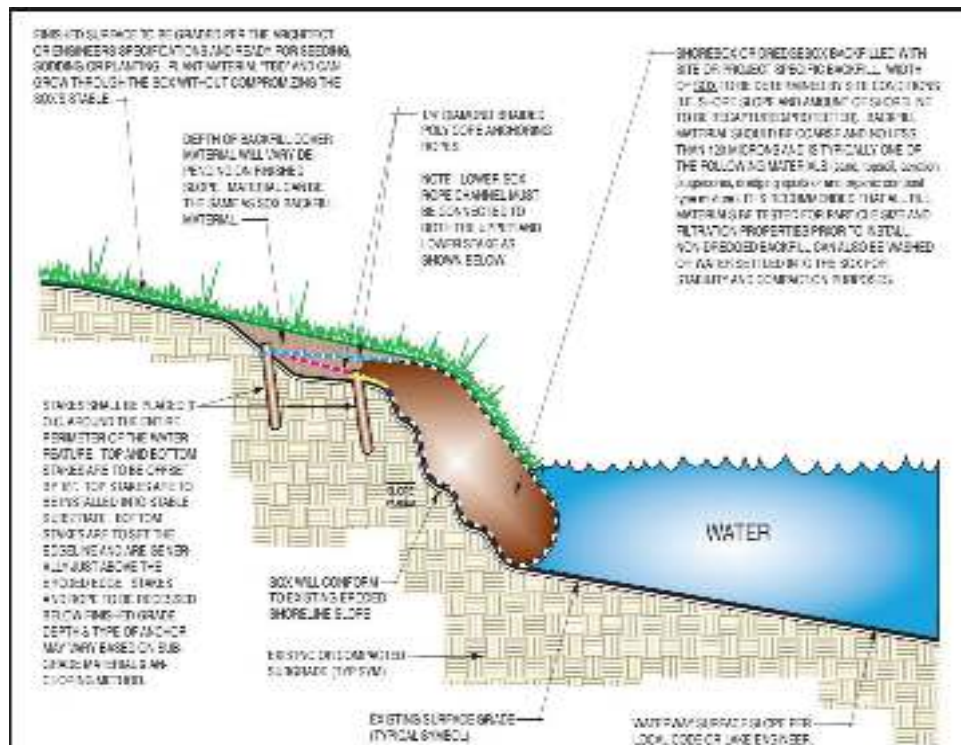






5 Part System

1. Technical Mesh
2. Anchors
3. Roping Channels
4. Fill Material
5. Vegetation



FILE: SHORESOX/DREDGESOX DETAIL (NO LINER) (10-10-10)

DATE: 10/10/10

TYPICAL SHORESOX/DREDGESOX DETAIL ERODED SHORELINE REPAIR TREATMENT (NO LINER)



NO PLANTING OR BACKFILL REQUIRED
FOR THIS DETAIL

DESIGNED BY:	DATE:
D. GRIFFIN	10/10/10
REVISIONS:	BY:
RL & BF	10/10/10
DATE:	10/10/10

Inert HDPE Knitted Mesh Material

5 Year Manufacturer's Warranty

Double-layered design with roping channels
knitted on all four sides



Porous Mesh allows water to ingress/egress
and retains fill > 150 microns



Rope: ¼" diamond braided, polycore
anchoring ropes





Wooden Stakes



Steel Stakes



Concrete Eye Hooks



Bullet Anchors



Arrowhead Anchors



Helical Anchors





TETHERING BACK TO STABILITY



- Crushed rock
- Concrete sand
- Dredge spoils
- Locally sourced organic media
- Excavated soils (onsite)
- Aerification Plugs





Layout SOX material & secure bottom rope channel to patented anchoring system.



Fill SOX System with organic media (blow-in compost, topsoil, or dredge spoils).



Roll and secure upper rope channel to anchoring system. Pound stakes subsurface.



Vegetate: sod, plant or seed the SOX system.



Layout SOX material & secure to Patented anchoring system.



Secure upper rope channel to the patented anchoring system.



Fill SOX with organic media (blow-in compost, topsoil and dredge spoils)



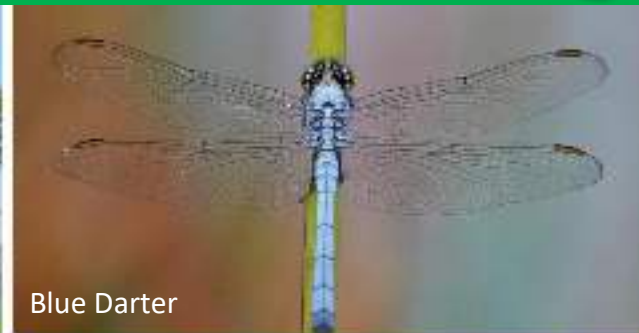
Vegetate: sod, plant or seed the SOX system.

SOX is *Modular*: It can be closed or connected at any point









Blue Darter



Great Blue Heron



Black-Bellied Whistling Duck



Silver Spotted Skipper



Halloween Pennant









CONTOURING THE NEW EDGE TO MATCH YOUR DESIGN



RECLAMATION OF 40' OF LAKE BANK





BEFORE



AFTER



BEFORE

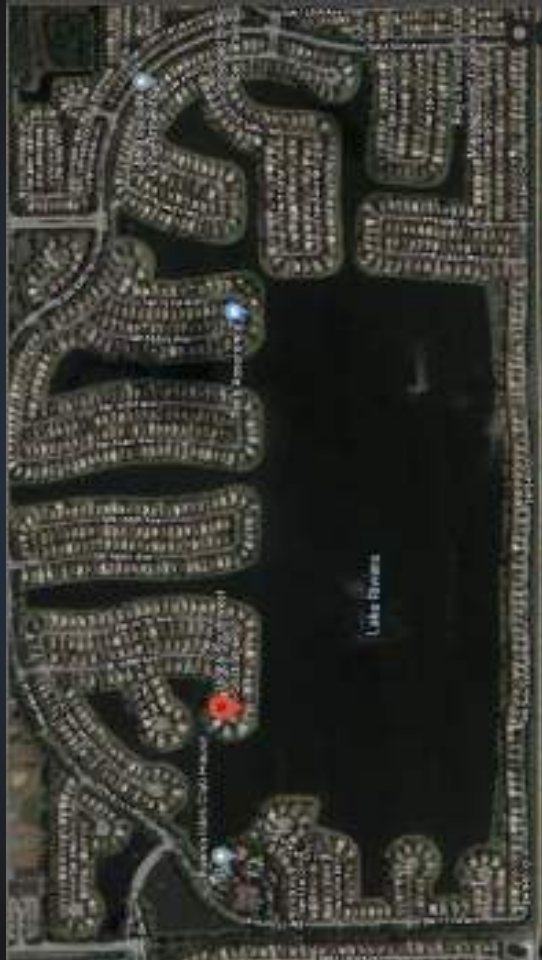


DURING



AFTER









BUILDING SEAWALLS - PUNTA GORDA, FLORIDA



BEFORE



AFTER



BEFORE



AFTER



AFTER



CITY OF LAUDERDALE LAKES
STORMWATER CONVEYANCE AND WATER QUALITY IMPROVEMENT PROJECT
PROJECT No. 19076

LEGEND
 EXISTING
 PROPOSED

SCALE
 0 100 FEET

DATE
 10/1/06

TITLE
 STORMWATER CONVEYANCE AND WATER QUALITY IMPROVEMENT PROJECT

Figure 1 consists of two maps of the Kalamazoo River watershed. Map A shows the watershed boundary, major roads, and the location of the Kalamazoo River. Map B shows the watershed boundary, major roads, and the location of the Kalamazoo River. Both maps include a scale bar and a north arrow.

BEFORE

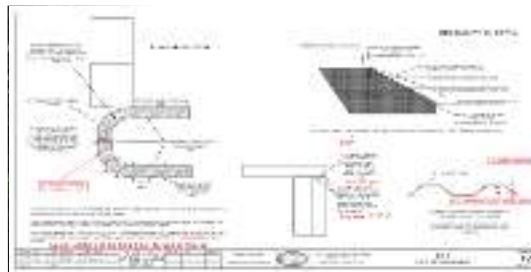
A photograph showing a deep, exposed soil profile with visible horizontal layers of different soil types. Several workers in blue uniforms are standing on the exposed face, and a concrete structure is visible on the right side.

DURING



AFTER





ROCK PEBBLE/GRAVEL AT THE TOE OF THE SOX SYSTEM – NORTH CAROLINA

BEFORE



DURING

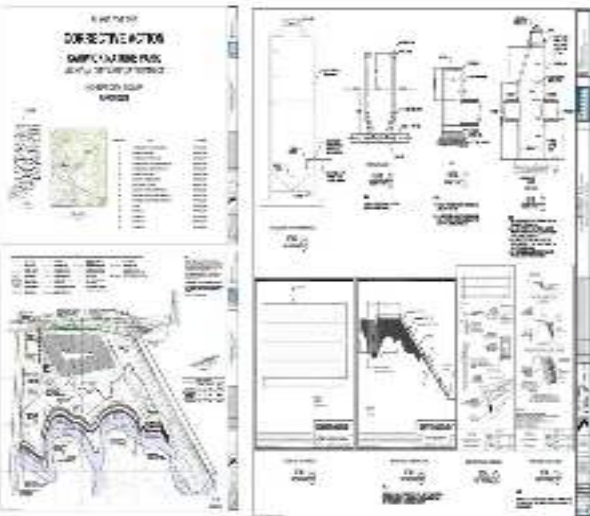


AFTER

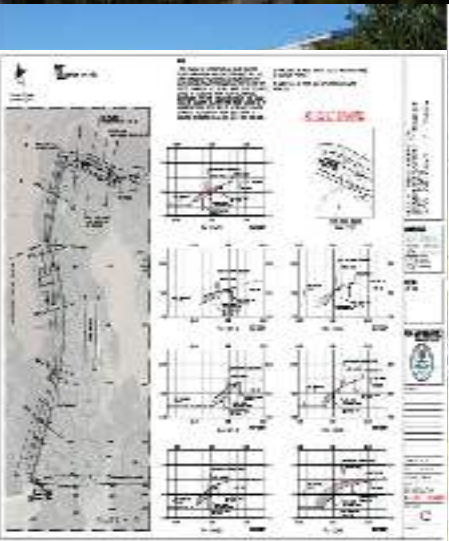


AFTER

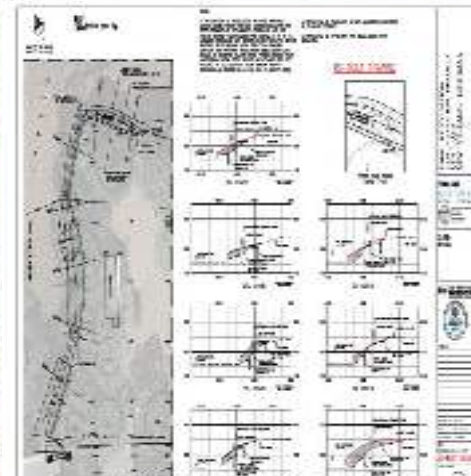




BANK RESTORATION - CITY PARKS NEW ORLEANS – SOX + PARTNERS



CREATING LIVING SHORELINES USING ECO-FRIENDLY SOX EROSION SOLUTIONS



Overgrown Root Vegetation After 3 Years! Willow Trees, Blackberry & Raspberry Bushes



CREEK BANK AND GREEN COMPLEX RESTORATION



Before



During



After





BEFORE



BEFORE – AUGUST 2018

STORMWATER RETENTION POND OUT FLOW RESTORATION – AUGUSTA, GA



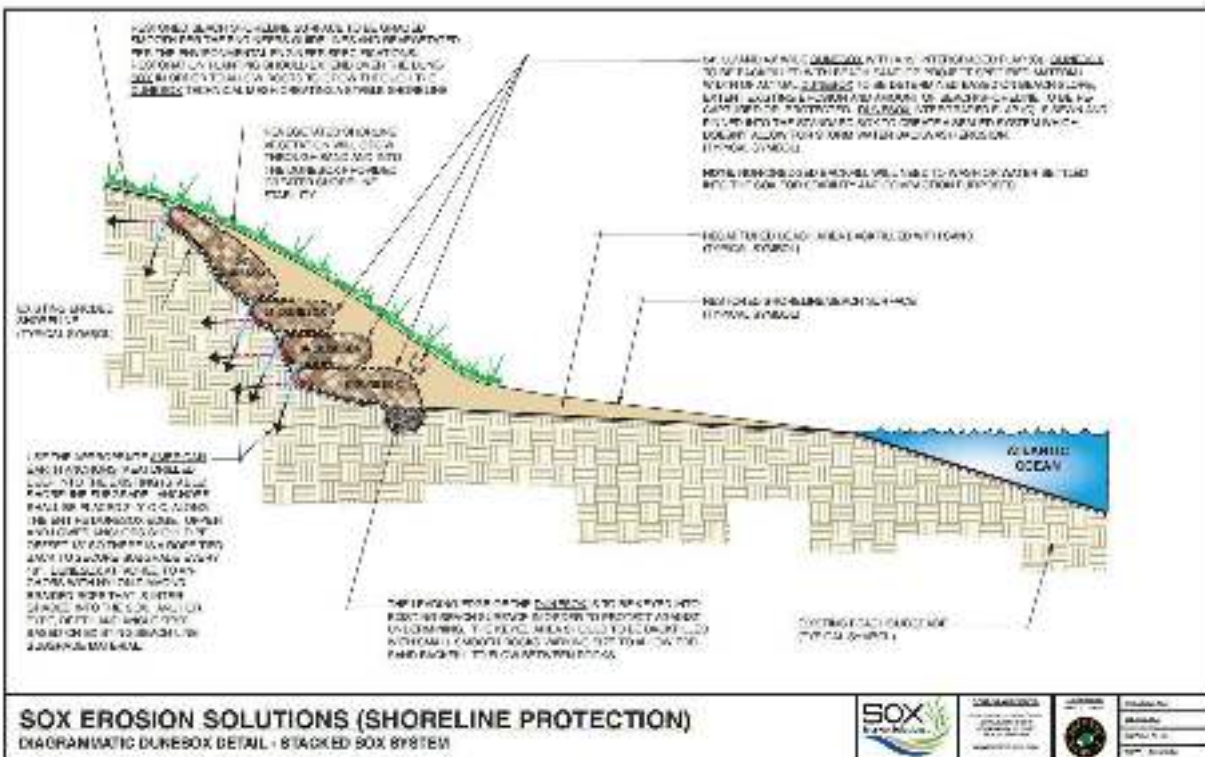
DURING



AFTER



WATER QUALITY IMPROVEMENT
AFTER MARCH 2019



75' Vertical Drop Off in Houston, TX - Stacking and Staircasing



BIOENGINEERED LIVING SHORELINES - 2 Tiers in Conroe, TX





TRM – Turf Reinforcement Matting – Reclamation of Lost Land



MUNICIPAL PROJECTS



US Army Corps
of Engineers
New York District





EvoGuard® is the reusable stormwater/erosion BMP technology, engineered and designed for perimeter control, sediment control and risk mitigation of mudslide/debris flow.

ORANGE COUNTY MUDSLLIDE PROTECTION



PILOT PROJECT WITH THE PORT OF CORPUS CHRISTI



PILOT PROJECT WITH THE PORT OF CORPUS CHRISTI

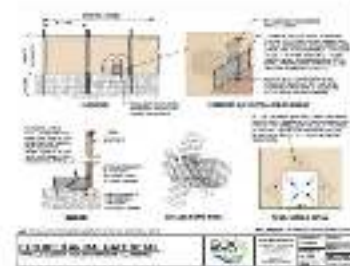
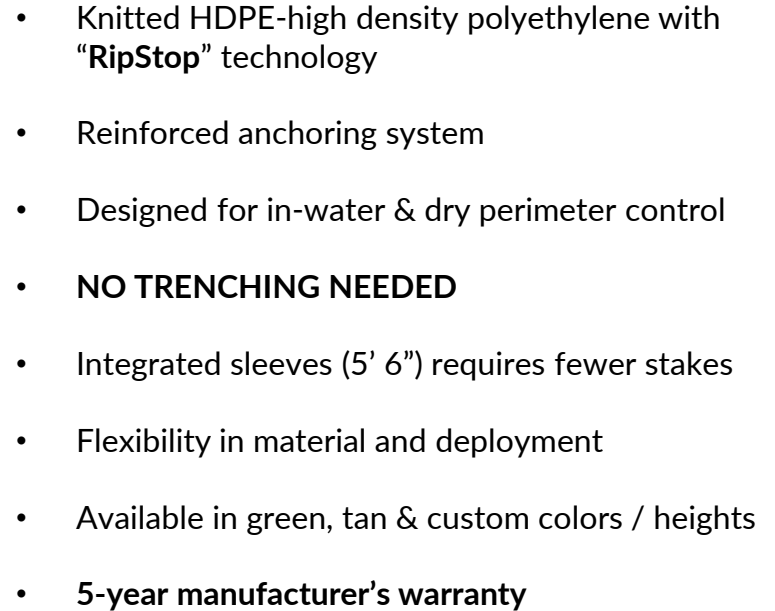


CONTAINMENT BARRIER AND SEDIMENT STOP - MICHIGAN



TURBIDITY CONTROL - CANADA









AU-ESCTF AUBURN UNIVERSITY
EROSION & SEDIMENT CONTROL
TESTING FACILITY





FLORIDA



CALIFORNIA



CANADA



CALIFORNIA



LOUISIANA



FLORIDA



MICHIGAN



MISSOURI



BEACHES
WORLDWIDE



MISSISSIPPI



ALABAMA



MICHIGAN



SCAN QR CODE FOR
1 PDH CREDIT



Alexis Mitchell
Regional Sales Manager
281-799-3902
amitchell@soxerosion.com